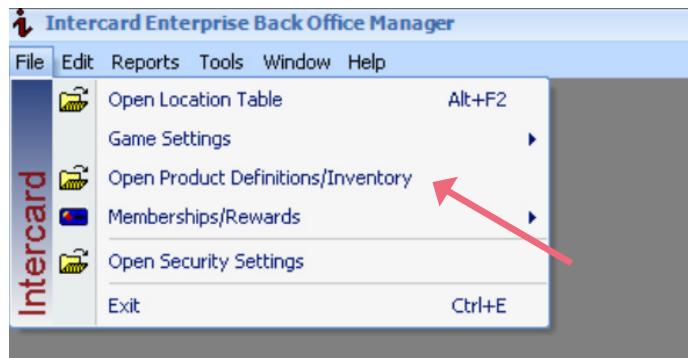


How to add a par value

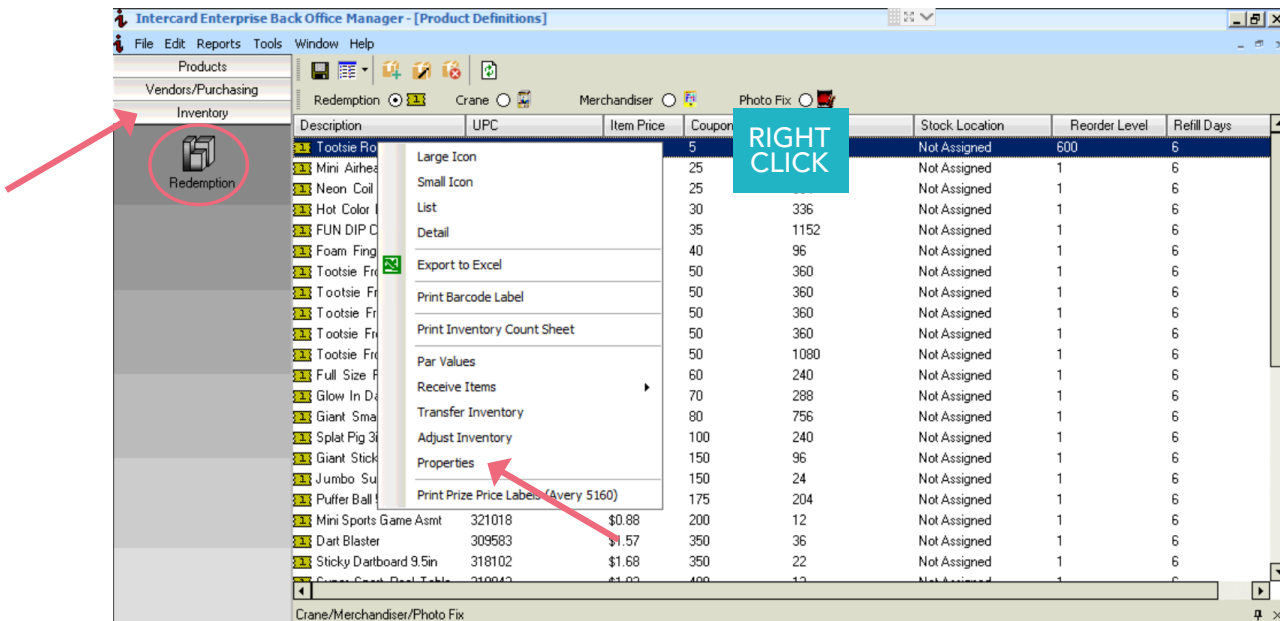
Intercard

Setting a par value works with our Rapid Reorder™ program, allowing your Intercard system to load a cart based on the previous week's scanned out items vs. your par values. The general rule for setting a par is 1.5x merchandise quantity, but every center is different and must be monitored closely. More information can be found in our Operational Toolkit at go.redemptionplus.com/operationaltoolkit.

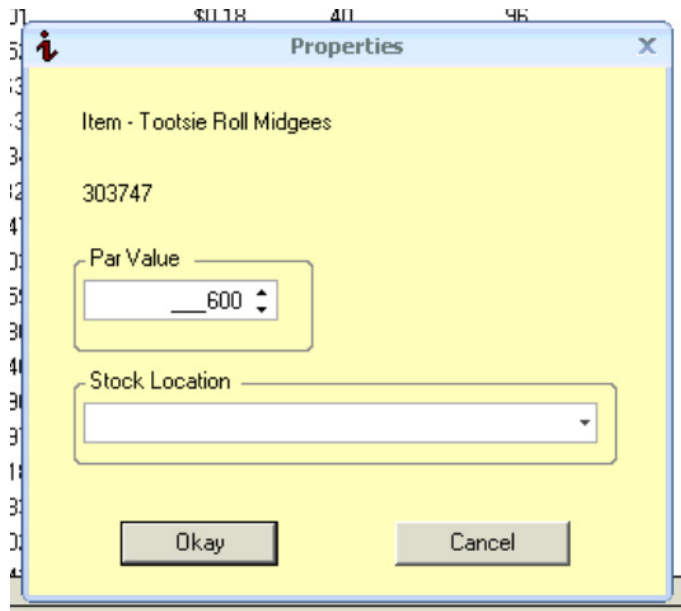
1 | Once you're logged in to Back Office Manager, click File and Open Product Definitions/Inventory.



2 | Open the Inventory tab and choose your location. Right click your item and choose Properties.

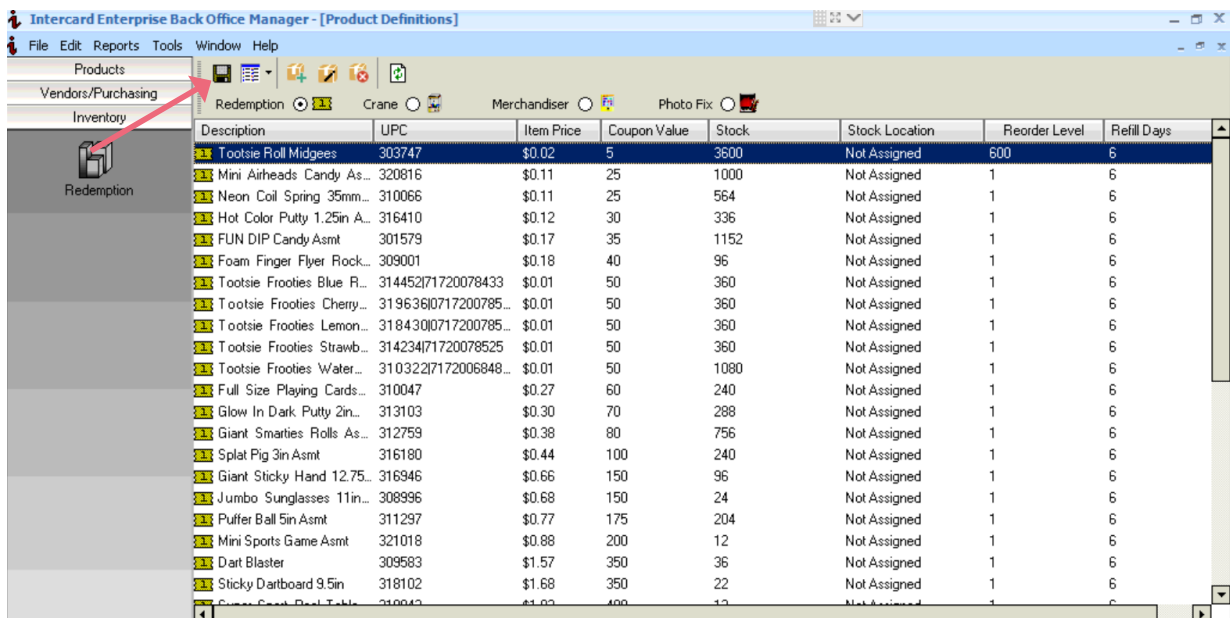


3 | Enter par value and click Okay.



The image shows a 'Properties' dialog box for an item named 'Tootsie Roll Midgees' with ID 303747. The 'Par Value' is set to 600. The 'Stock Location' field is empty. The dialog has 'Okay' and 'Cancel' buttons.

4 | Save



The screenshot shows the 'Intercard Enterprise Back Office Manager - [Product Definitions]' window. The 'Redemption' tab is active, and a table of items is displayed. A red arrow points to the 'Redemption' icon in the left sidebar.

| Description | UPC | Item Price | Coupon Value | Stock | Stock Location | Reorder Level | Refill Days |
|-----------------------------|----------------------|------------|--------------|-------|----------------|---------------|-------------|
| Tootsie Roll Midgees | 303747 | \$0.02 | 5 | 3600 | Not Assigned | 600 | 6 |
| Mini Airheads Candy As... | 320816 | \$0.11 | 25 | 1000 | Not Assigned | 1 | 6 |
| Neon Coil Spring 35mm... | 310066 | \$0.11 | 25 | 564 | Not Assigned | 1 | 6 |
| Hot Color Putty 1.25in A... | 316410 | \$0.12 | 30 | 336 | Not Assigned | 1 | 6 |
| FUN DIP Candy Asmt | 301579 | \$0.17 | 35 | 1152 | Not Assigned | 1 | 6 |
| Foam Finger Flyer Rock... | 309001 | \$0.18 | 40 | 96 | Not Assigned | 1 | 6 |
| Tootsie Frooties Blue R... | 314452 71720078433 | \$0.01 | 50 | 360 | Not Assigned | 1 | 6 |
| Tootsie Frooties Cherry... | 319636 0717200785... | \$0.01 | 50 | 360 | Not Assigned | 1 | 6 |
| Tootsie Frooties Lemon... | 318430 0717200785... | \$0.01 | 50 | 360 | Not Assigned | 1 | 6 |
| Tootsie Frooties Strawb... | 314234 71720078525 | \$0.01 | 50 | 360 | Not Assigned | 1 | 6 |
| Tootsie Frooties Water... | 310322 7172006848... | \$0.01 | 50 | 1080 | Not Assigned | 1 | 6 |
| Full Size Playing Cards... | 310047 | \$0.27 | 60 | 240 | Not Assigned | 1 | 6 |
| Glow In Dark Putty 2in... | 313103 | \$0.30 | 70 | 288 | Not Assigned | 1 | 6 |
| Giant Smarties Rolls As... | 312759 | \$0.38 | 80 | 756 | Not Assigned | 1 | 6 |
| Splat Pig 3in Asmt | 316180 | \$0.44 | 100 | 240 | Not Assigned | 1 | 6 |
| Giant Sticky Hand 12.75... | 316946 | \$0.66 | 150 | 96 | Not Assigned | 1 | 6 |
| Jumbo Sunglasses 11in... | 308996 | \$0.68 | 150 | 24 | Not Assigned | 1 | 6 |
| Puffer Ball 5in Asmt | 311297 | \$0.77 | 175 | 204 | Not Assigned | 1 | 6 |
| Mini Sports Game Asmt | 321018 | \$0.88 | 200 | 12 | Not Assigned | 1 | 6 |
| Dart Blaster | 309583 | \$1.57 | 350 | 36 | Not Assigned | 1 | 6 |
| Sticky Dartboard 9.5in | 318102 | \$1.68 | 350 | 22 | Not Assigned | 1 | 6 |
| Super Soft Pool Table | 310042 | \$1.00 | 400 | 12 | Not Assigned | 1 | 6 |

Make updates and adjustments promptly to keep your inventory accurate and Rapid Reorder™ running smoothly.